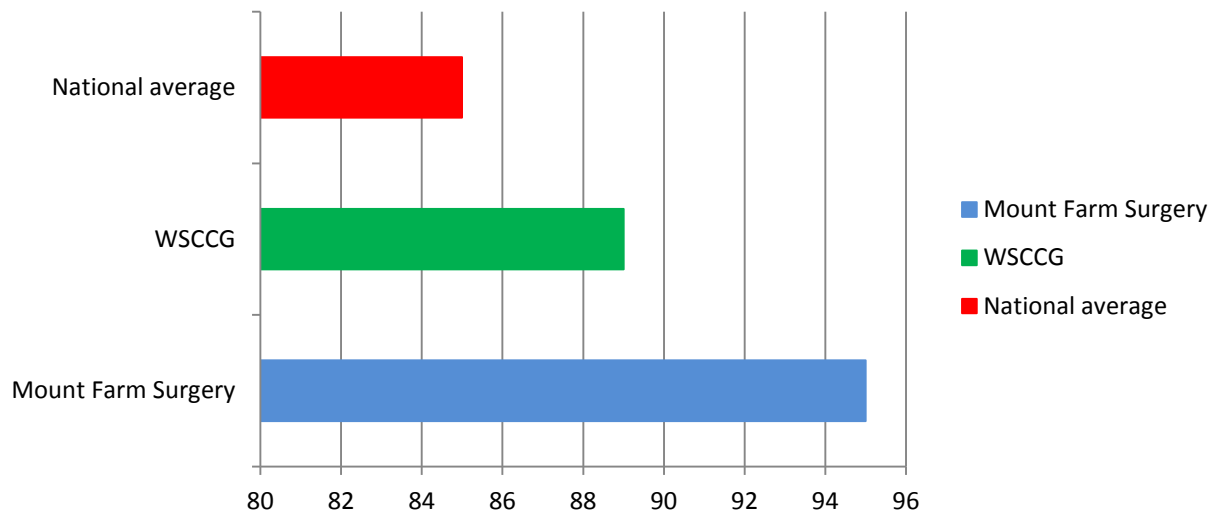
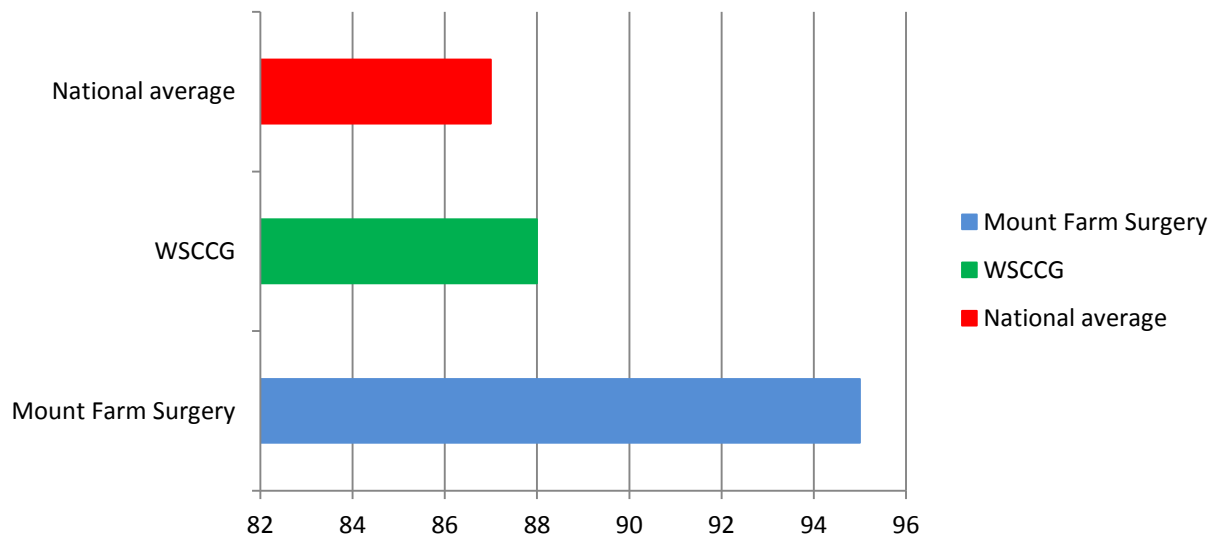


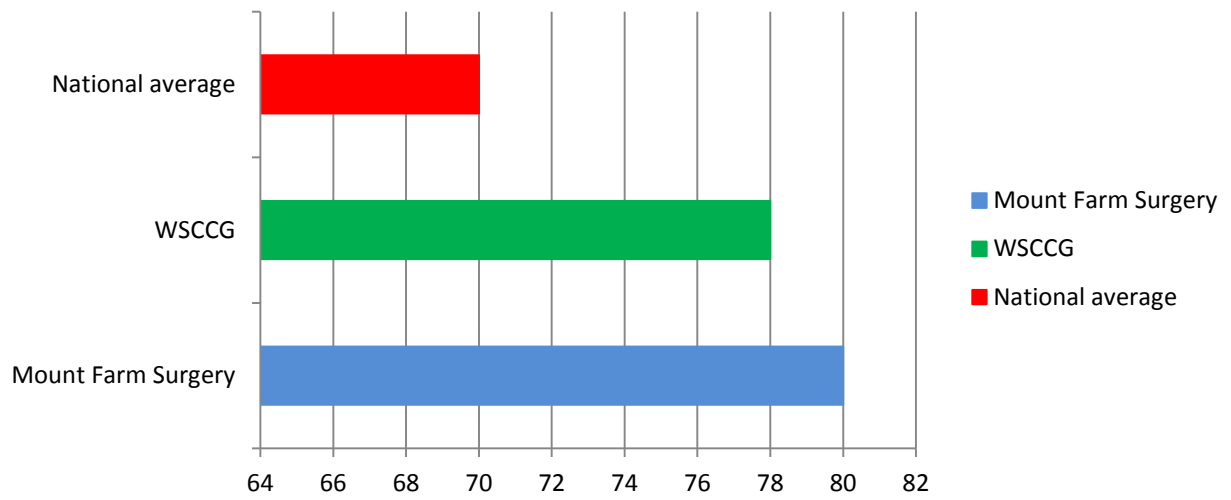
## Overall, how would you describe your experience of your GP surgery?



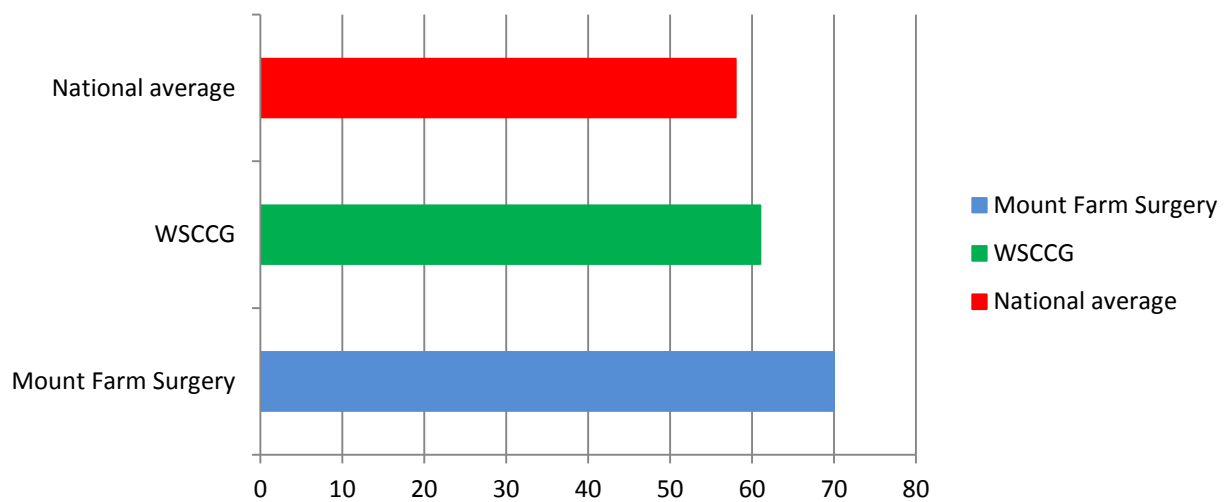
## Percentage of patients who said they find the reception staff helpful



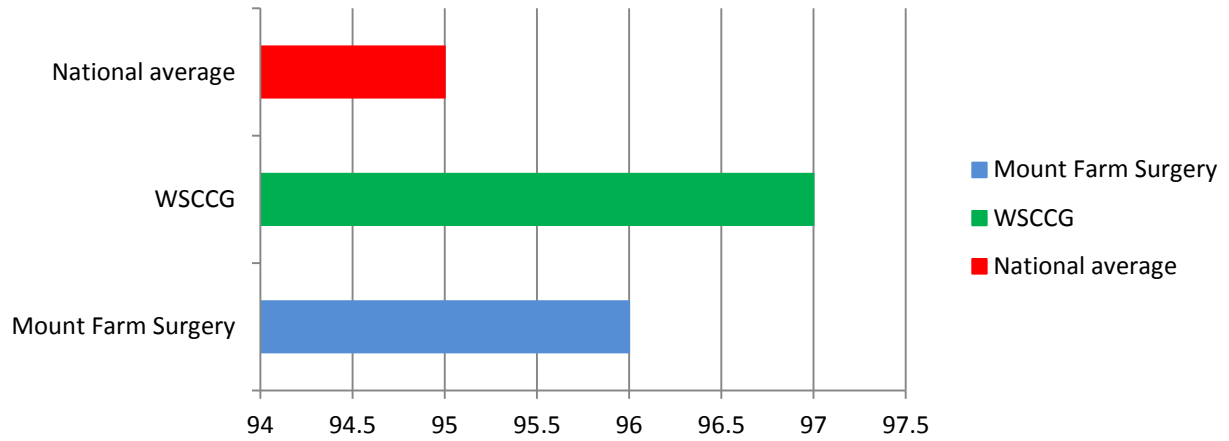
### Percentage of patients who said they find it easy to get through to the surgery by phone



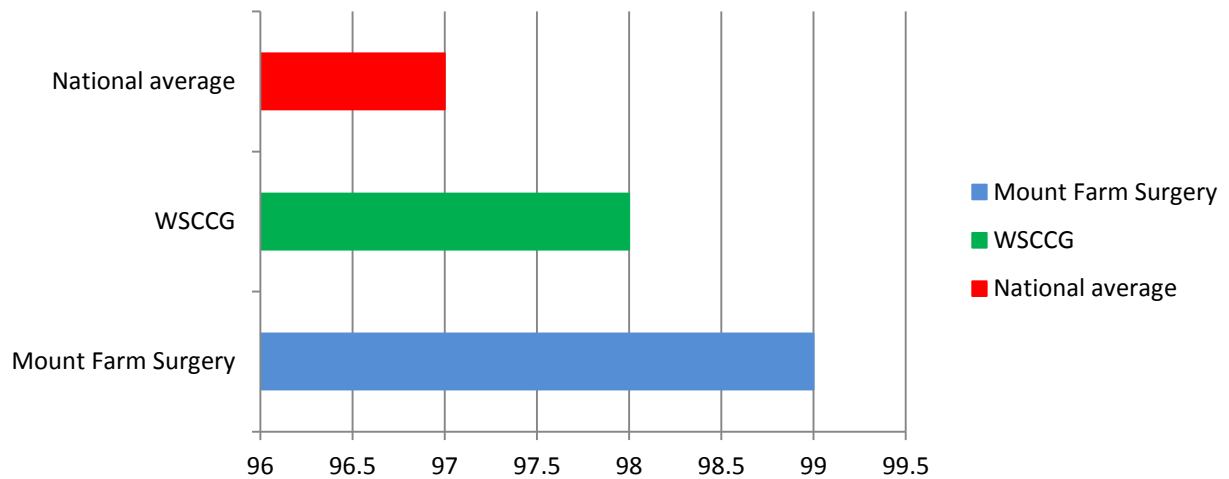
### Percentage of patients who said they usually wait 15 minutes or less after their appointment time to be seen



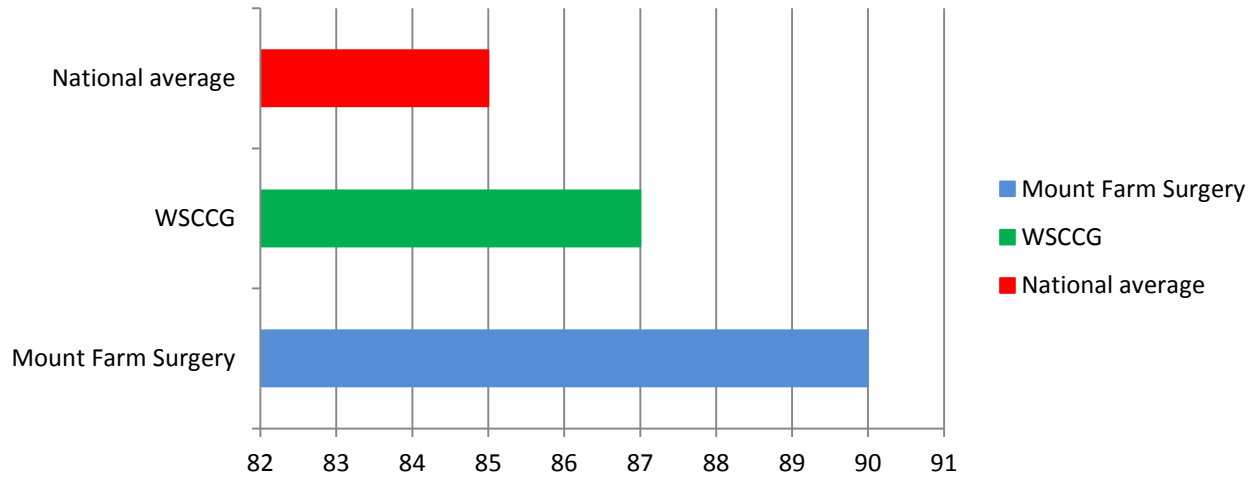
### Percentage of patients who said they had confidence and trust in the last GP they saw or spoke to



### Percentage of patients who said they had confidence and trust in the last nurse they saw or spoke to



### Percentage of patients who said they were able to get an appointment the last time they wanted to see a GP or nurse



### Percentage of patients who said the last appointment they were offered was convenient to them

